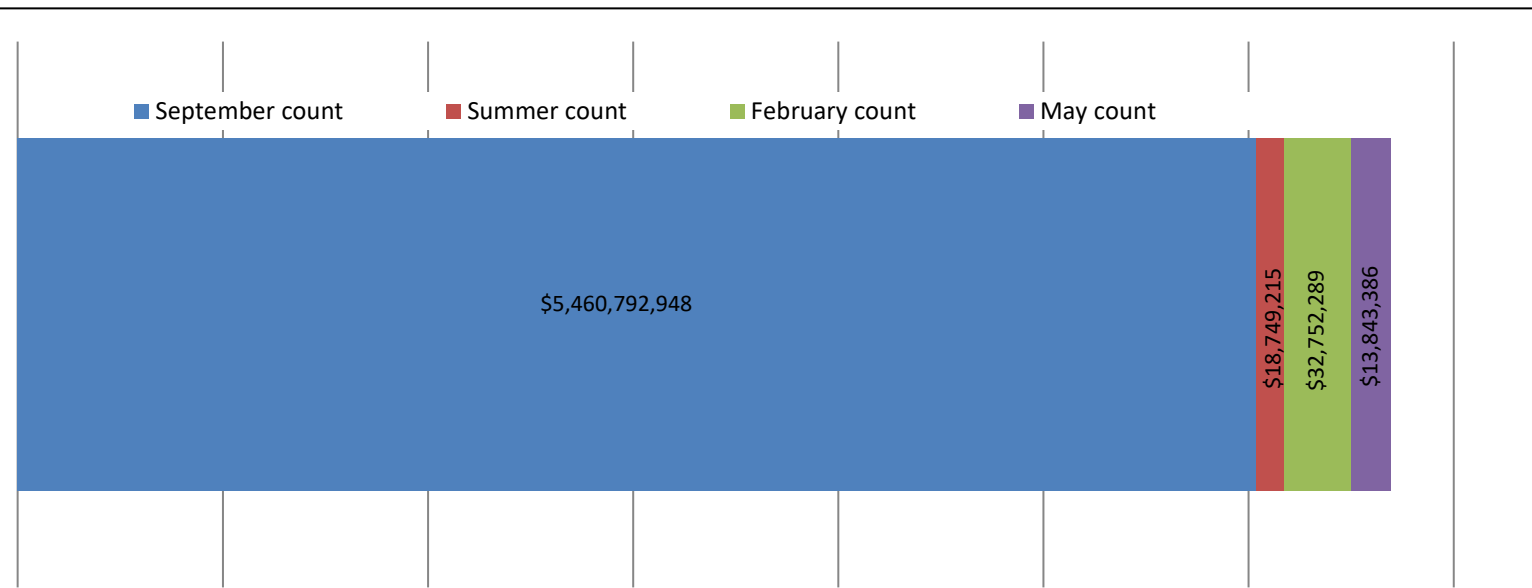


Overview of the 2020/21 Operating Grant Allocation Formula

Allocation of the total Operating Block and Enrolment counts (2020/21 estimated as at March 2020)



Funding Adjustments:

- Districts' preliminary allocations are adjusted after each of the enrolment counts; September 30th, February and May;
- District preliminary allocation will increase if actual enrolment is higher than district estimated enrolment; and consequently decline if actual enrolment is lower than district estimated enrolment;
- Funding Protection is calculated following the September enrolment count only – this supplemental grant is calculated *last* and ensures that districts do not experience a funding decline of greater than 1.5% compared to the previous year *for the September count*;
- The full operating block must be allocated to districts by June 30 of the current school year;
- Funding is disbursed in a "just in time" manner to closely match district cash needs.

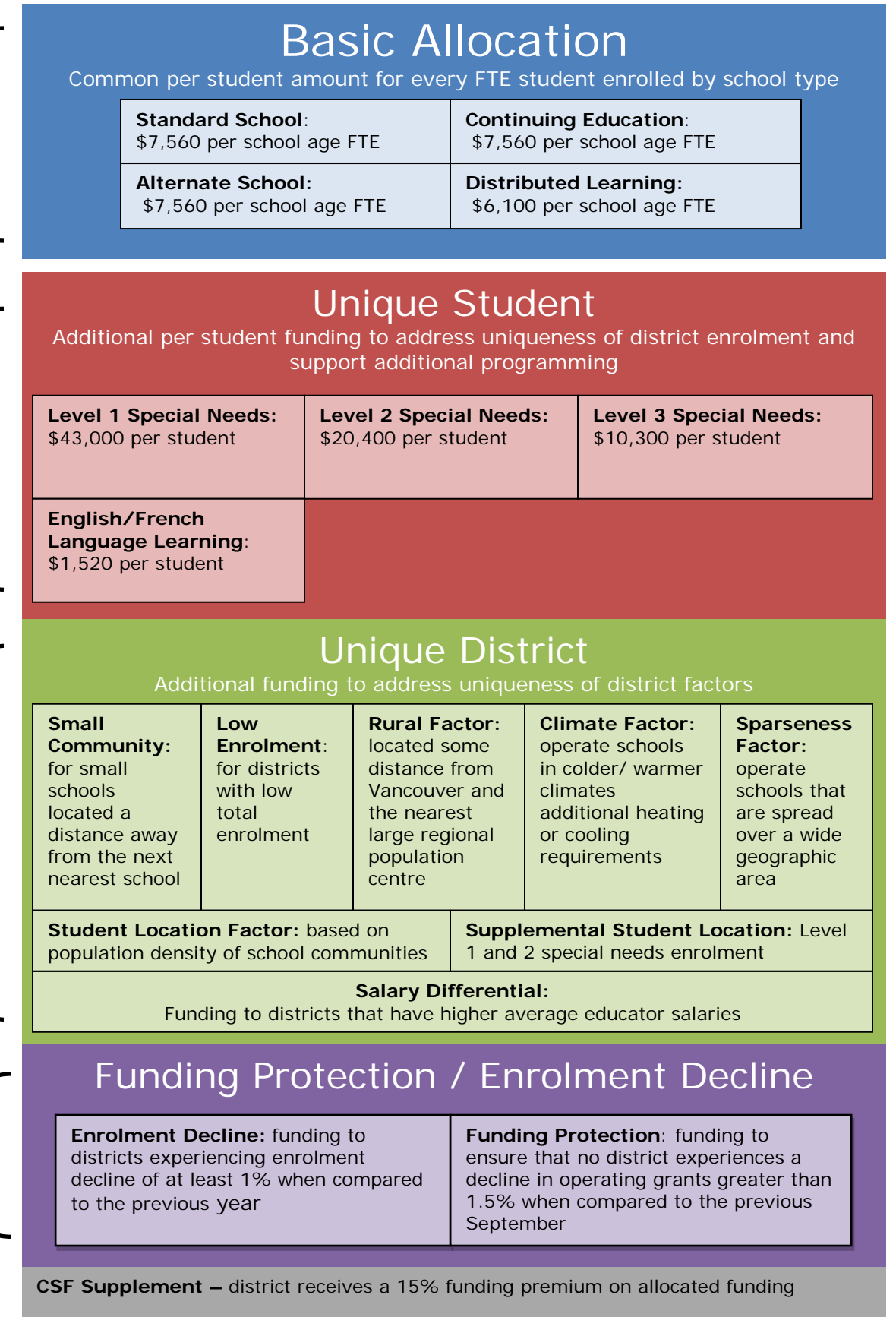
Provincial Totals

76% allocated through the Basic Allocation

16% allocated to recognize unique student enrolment

8% allocated to recognize unique district factors

0.2% allocated to buffer the effects of declining enrolment



All Funding information estimated for the 2020/21 School Year